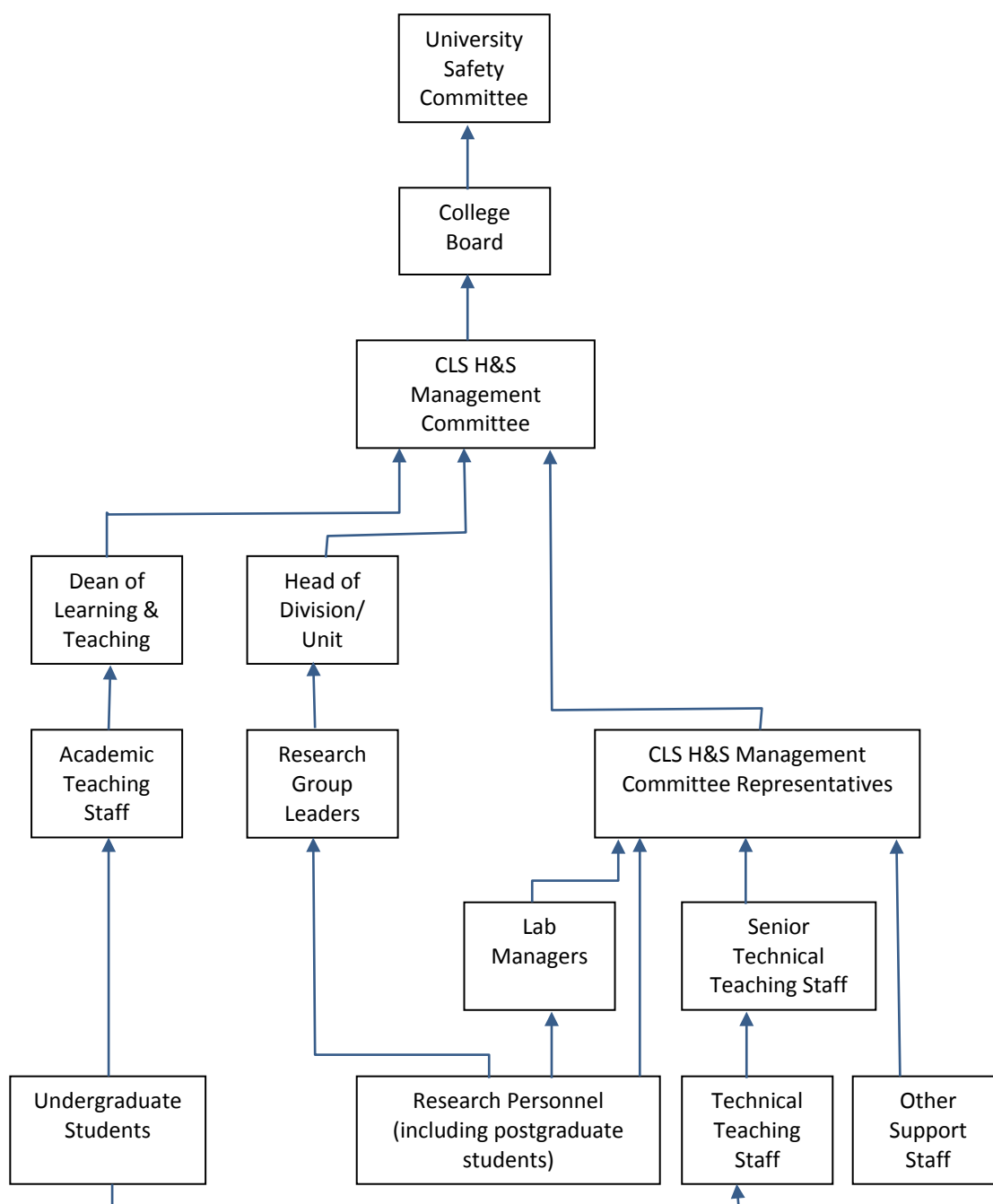


APPENDIX 5

CLS HEALTH & SAFETY GENERAL REPORTING STRUCTURE



Note! This is not a management hierarchy (see Appendix 4), nor is it an incident/accident reporting structure (see Appendix 6). The General Reporting Structure is a mechanism for conveying health & safety related problems, comments, suggestions, written reports, etc. to the appropriate individual or committee.