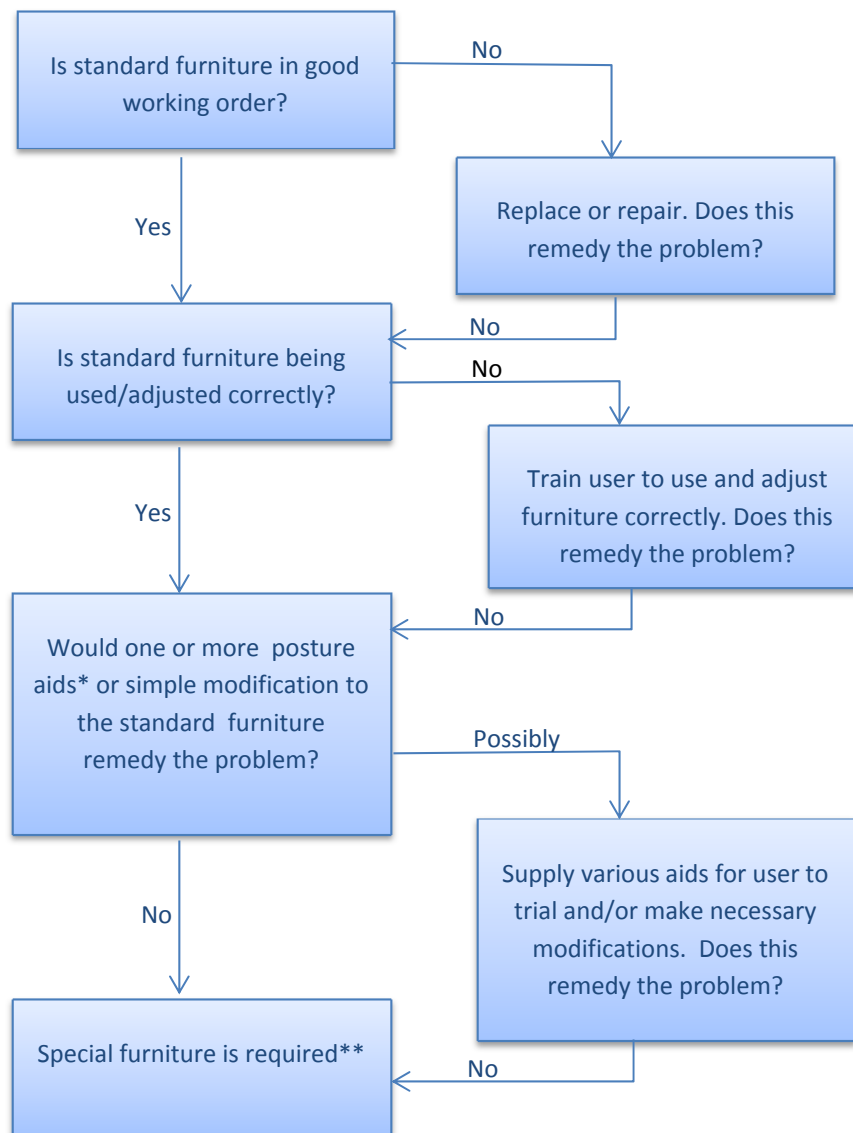


## IS SPECIAL FURNITURE REQUIRED?



\* Posture aid, e.g. lumbar cushion/roll, foot rest, special seat cushion, BackJoy. Simple modification to the standard furniture, e.g. raising a desk on blocks made by E&B. Users should trial the aid/modification for at least one week, unless it begins to exacerbate their pain/discomfort.

\*\* Get specialist, one-to-one advice from the representatives of the companies identified in the relevant framework agreement: Workplace Furniture Contracts. In the case of more serious ill health/injury/disability Occupational Health, Disability Services and/or the medical practitioner treating the individual may have to be consulted. The lowest cost option should be considered in the first instance. Company reps should be able to arrange for a no obligation, free trial of the selected item. If the Framework companies cannot supply furniture that meets the end users requirements, other suppliers may then be considered.