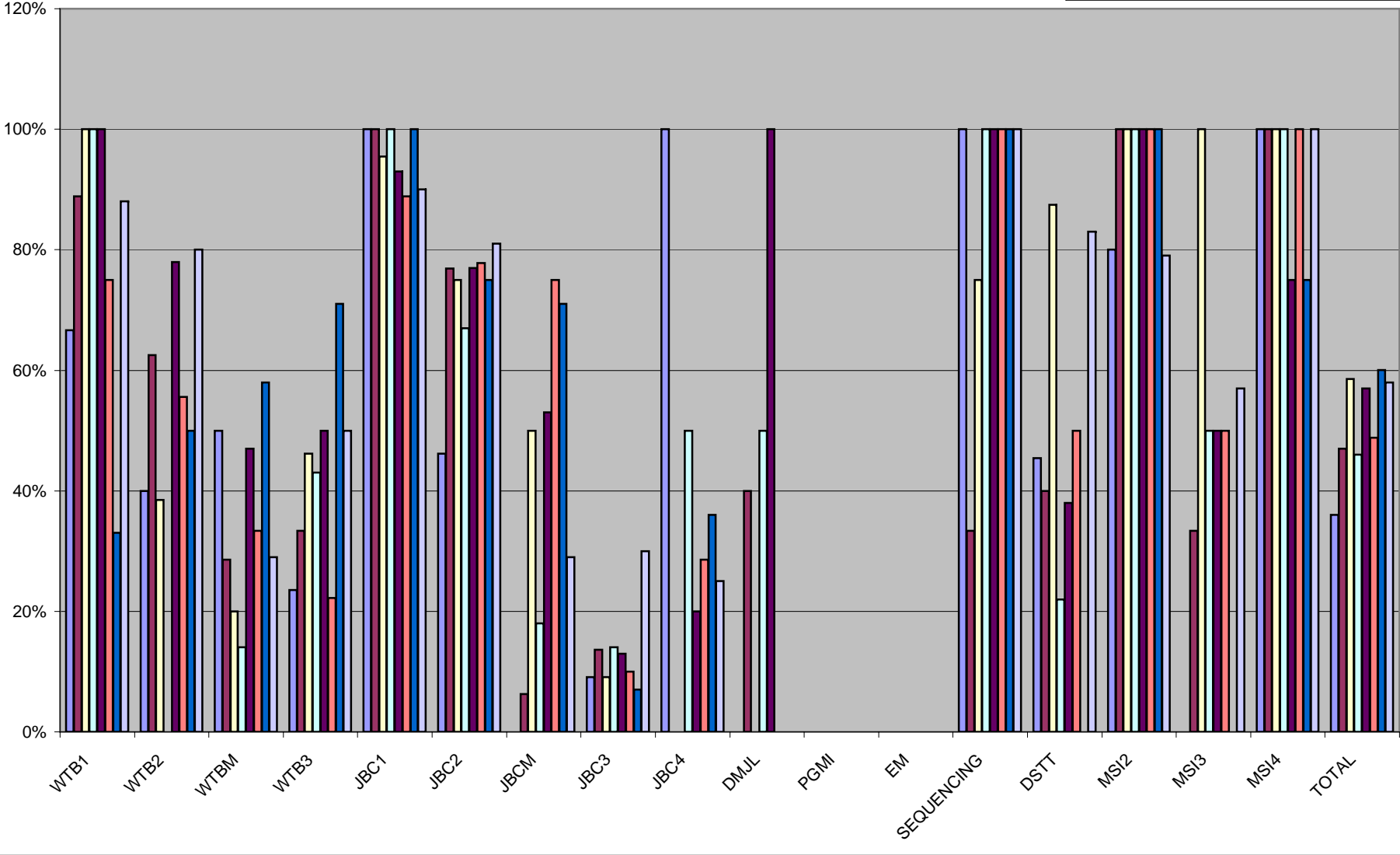
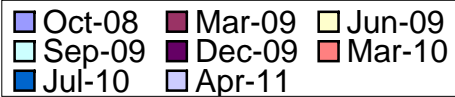


Lab Coat Policy Compliance



Lab Coat Signage

Currently, the sign shown in figure 1 is on all main lab doors apart from those in MRCPPU, SCILLS and DSTT where the alternative sign (figure 2) is displayed.

After the signs were posted, the Director of MRC PPU asked for the wording on the MRC/SCILLS/DSTT sign to be changed to "CLS recommends that you wear a lab coat in this area".

CLS H&S recommends that the signs be taken down rather than have the "MRC" version on display. If an inspector from the HSE, or any other enforcing authority, picked up on the fact that we have changed the wording on a standard, mandatory safety sign, it would be impossible to justify.

CLS H&S doubts that any type of lab coat sign will improve compliance. The non compliance problem is not down to people being unaware of the policy, but people knowing full well they are expected to wear a lab coat and choosing, and being allowed by their line managers to choose, not to wear one. Signage will not solve this problem.

What course of action should be taken:

1. Leave all signs as they are?
2. Change wording on MRC sign as requested?
3. Remove MRC signs?
4. Remove MRC signs and replace with standard signs (i.e. fig.1)?
5. Remove both types of sign?



figure 1



figure 2

Lab Coat Storage

Lab Managers have indicated that there are not enough coat hooks for storing lab coats in TC Suites and Hot Rooms. See figures 1 to 3 for examples. This leads to lab coats being piled up on top of each other and, in turn, concerns about contamination being transferred from one coat to another. In many areas there is simply not enough space for additional coat hooks. We cannot insist that lab coats are worn if we do not provide adequate storage facilities. Therefore, an alternative storage solution must be found. One option is to store the lab coats in racks to similar to those shown in figure 4. Any comments? Can we go ahead with a trial?



figure 1: Hot Room



figure 2: CL2 TC Suite



figure 3: CL2 TC Suite



Height 1850mm Width 710mm Depth 420mm

- [Specifications](#)
- [Colours](#)
- [Certifications](#)

Double column frame complete with trays

- includes 34 shallow trays in your choice of colour
- Ref 2625 F1Set

figure 4