



College of Life Sciences

the best scientific institution in Europe for scientists to work in

THE SCIENTIST • 2010



The Research Assessment Exercise 2008 ranked Life Sciences at Dundee among the top 5 institutions in the UK



2011

# College of Life Sciences: Medical Research Council (MRC) PhD Programme

Candidates with an outstanding academic record and a strong interest in carrying out research in the prestigious College of Life Sciences at the University of Dundee are invited to apply to join our new MRC PhD Programme from 5th September 2011.

These 4-year studentships carry a tax-free stipend of £16,000 per annum. University fees will also be covered by the award and each student will be provided with a travel allowance to enable them to attend conferences and training courses. Students will also be provided with a laptop computer for use throughout their studies.

The first 6 months of the studentship comprise two 3-month rotation projects carried out in different research groups before the final choice of supervisor and project is made.

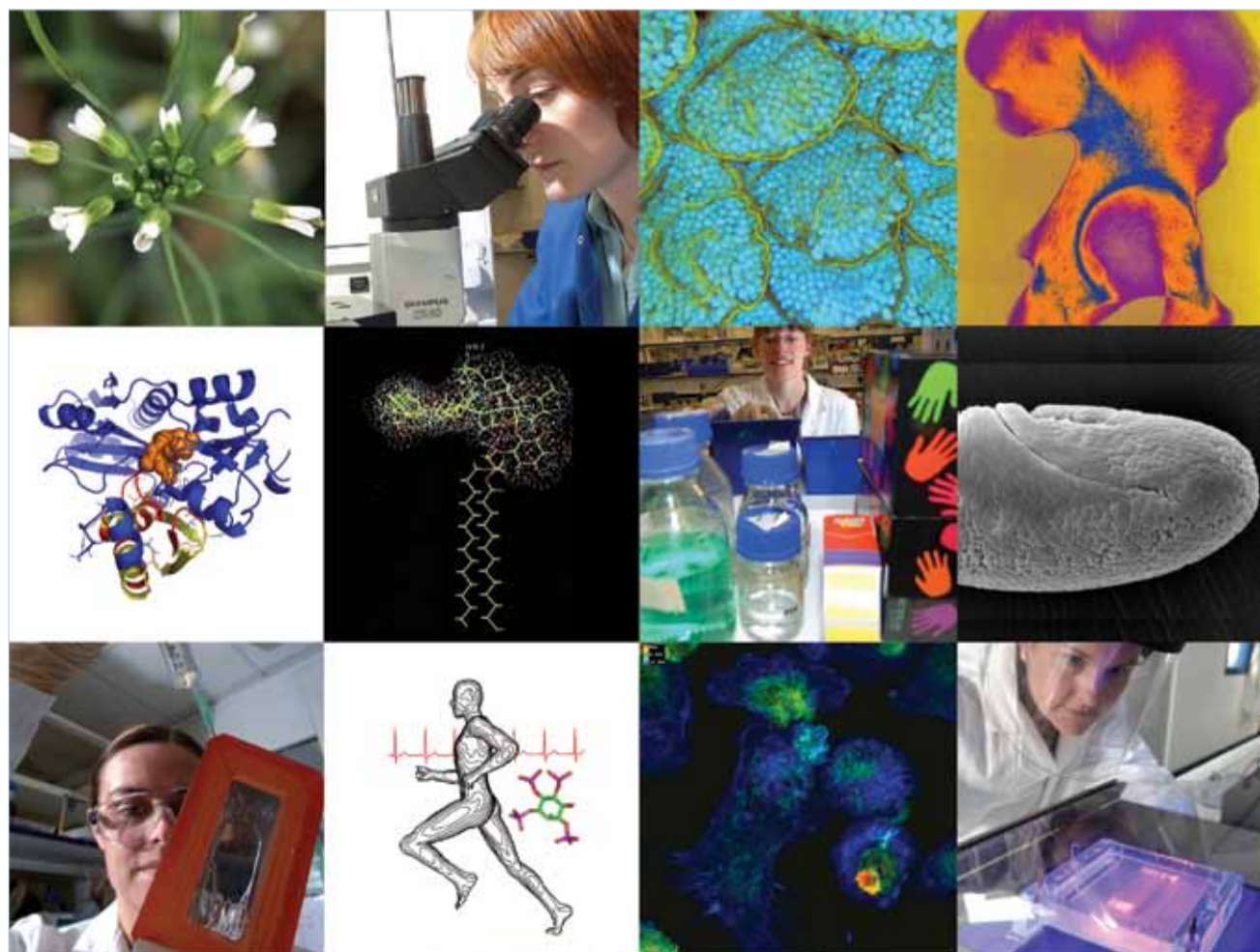
Projects are available in the following areas:

- Molecular Biology of Disease
- Host-Pathogen Interaction
- Biochemistry and Drug Discovery Development and Stem Cells'

Studentships are normally restricted to UK citizens, but in some circumstances, EU nationals are also eligible (<http://www.mrc.ac.uk>). We therefore welcome applications from both UK citizens and EU nationals.

If you would like to apply for one of these competitive awards, please complete the on-line application form which can be found at:

[www.lifesci.dundee.ac.uk/PhD\\_Programme\\_Application](http://www.lifesci.dundee.ac.uk/PhD_Programme_Application)



Full details on projects and how to apply can be found on our PhD Programme web pages

[www.lifesci.dundee.ac.uk/PhD\\_Programmes](http://www.lifesci.dundee.ac.uk/PhD_Programmes)

Information enquiries may be made to Mrs Gail Guild • [g.guild@dundee.ac.uk](mailto:g.guild@dundee.ac.uk)

MRC

Medical Research Council